



Pueblo Grande

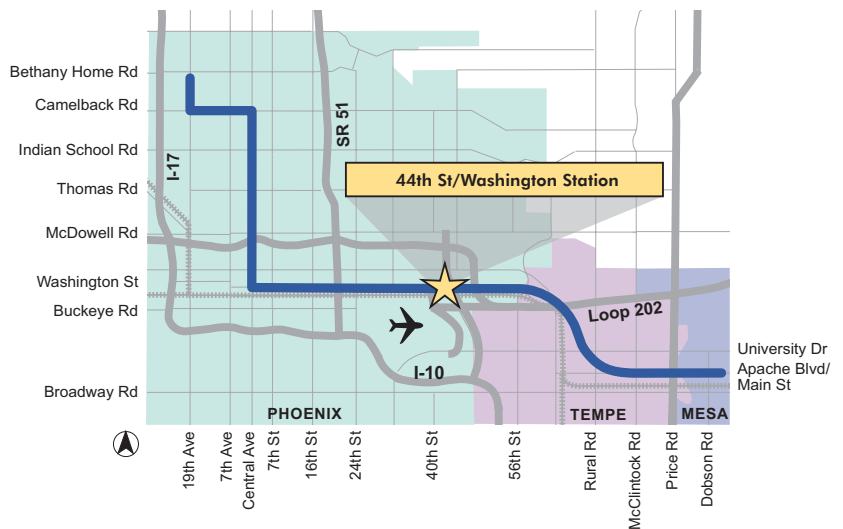


Sky Harbor International Airport



Holiday Inn

LIGHT RAIL PROJECT ALIGNMENT



ABOUT THIS STATION

The key role of the 44th Street station will be to serve as a transfer point for employees and travelers destined for Sky Harbor International Airport.

Passengers will be able to transfer from the light rail station to Sky Harbor Airport's planned automated people mover system, which will connect the METRO light rail station to the economy parking lots, all terminals and the consolidated rental car facility. Phase one of the people-mover system is scheduled for completion a few years after light rail service begins, with service to the light rail station by 2012. Interim connections between the light rail station and the airport will be provided by bus shuttles.

Sky Harbor is one of the busiest airports in the United States, with more than 200,000 daily visitors and approximately 24,000 employees.

Due to its proximity to the airport, this station will serve several hotels catering to airline travelers.

In addition, two major Valley cultural attractions, Pueblo Grande Museum and the Chinese Cultural Center, are a short walk from the station.

STATION AREA DEMOGRAPHICS

Population	484
Employees	810
Households	119
Average Household Income	\$44,943

Source: 2000 census (1/2 mile radius or 10 min. walk from station)



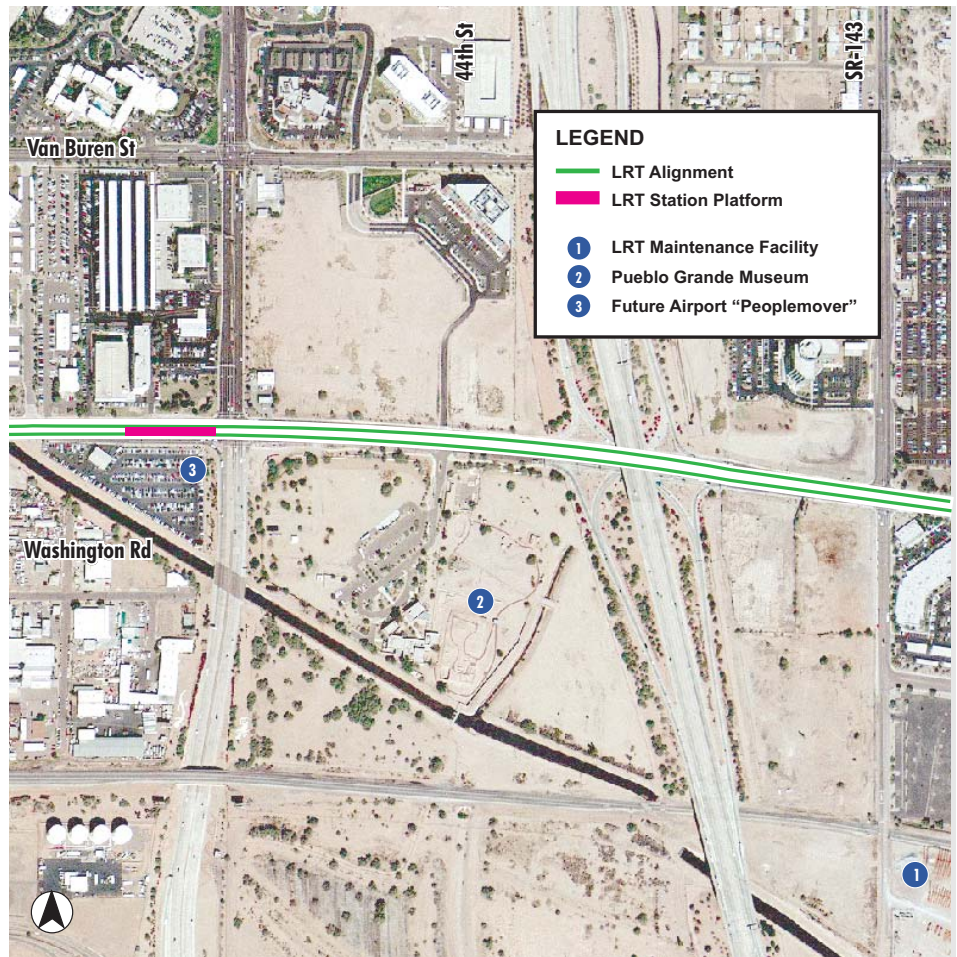
Desert Schools FCU Building

STATION HIGHLIGHTS

- Sky Harbor Airport, with an automated people-mover connection between light rail and the airport
- Holiday Inn Select
- Doubletree Hotel
- Wyndham Hotel
- Chinese Cultural Center
- Pueblo Grande Museum
- Phoenix Greyhound Park and Swap Meet

DEVELOPMENT OPPORTUNITIES

The City of Phoenix's Downtown Development Office is working to maximize the community's investment in the light rail system by promoting and attracting transit-oriented development near light rail stations. The city's goal is to enhance and develop high quality, vibrant mixed-use urban environments that are carefully planned, designed to attract and increase transit ridership and are pedestrian friendly. Please contact our office for information on development opportunities and initiatives at or near the 18 light rail station locations in Phoenix.



A rendering of the Washington Street/44th Street Station looking west

CONTACT INFORMATION

CITY OF PHOENIX

Downtown Development Office
 200 West Washington, 20th Floor, Phoenix, AZ 85003
 Phone: (602) 534-7143 Fax: (602) 534-7140
 TTY: (602) 534-3476 Email: downtown@phoenix.gov

VALLEY METRO RAIL

411 N. Central Avenue, Ste. 200, Phoenix, AZ 85004
 Phone: (602) 534-1807 TTY: (602) 322-4499
 Email: rail@valleymetro.org