



GateWay Community College

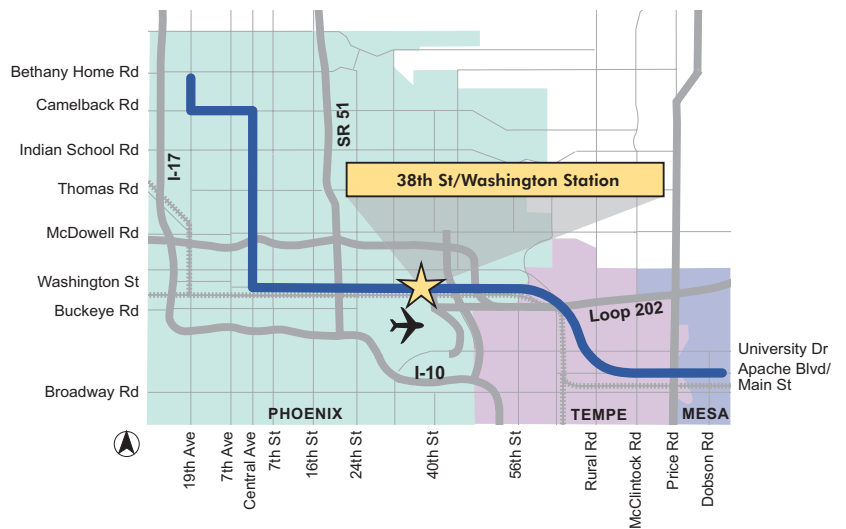


Phoenix Sky Harbor Airport



Phoenix Greyhound Raceway

LIGHT RAIL PROJECT ALIGNMENT



ABOUT THIS STATION

The 38th Street Station will serve as the primary light rail boarding point for students at GateWay Community College and employees and visitors to nearby offices and hotels. Due to its proximity to Sky Harbor Airport, this area is active at all hours of the day. Circulator bus routes will connect the station to key activity centers in the area, including the GateWay Core at 44th Street and Van Buren.

The long-term use of the 38th Street Station will be influenced by the expansion of Sky Harbor Airport. The character of Washington Street could change significantly with implementation of the airport's Long Range Master Plan, which includes relocation of many of the car rental facilities from Washington Street to the airport's consolidated facility.

A 189-space park-and-ride will be located north of the station to accommodate the many passengers expected to drive or ride the bus to this station.

STATION AREA DEMOGRAPHICS

Population	1,538
Employees	2,408
Households	433
Average Household Income	\$25,537

Source: 2000 census (1/2 mile radius or 10 min. walk from station)

STATION HIGHLIGHTS

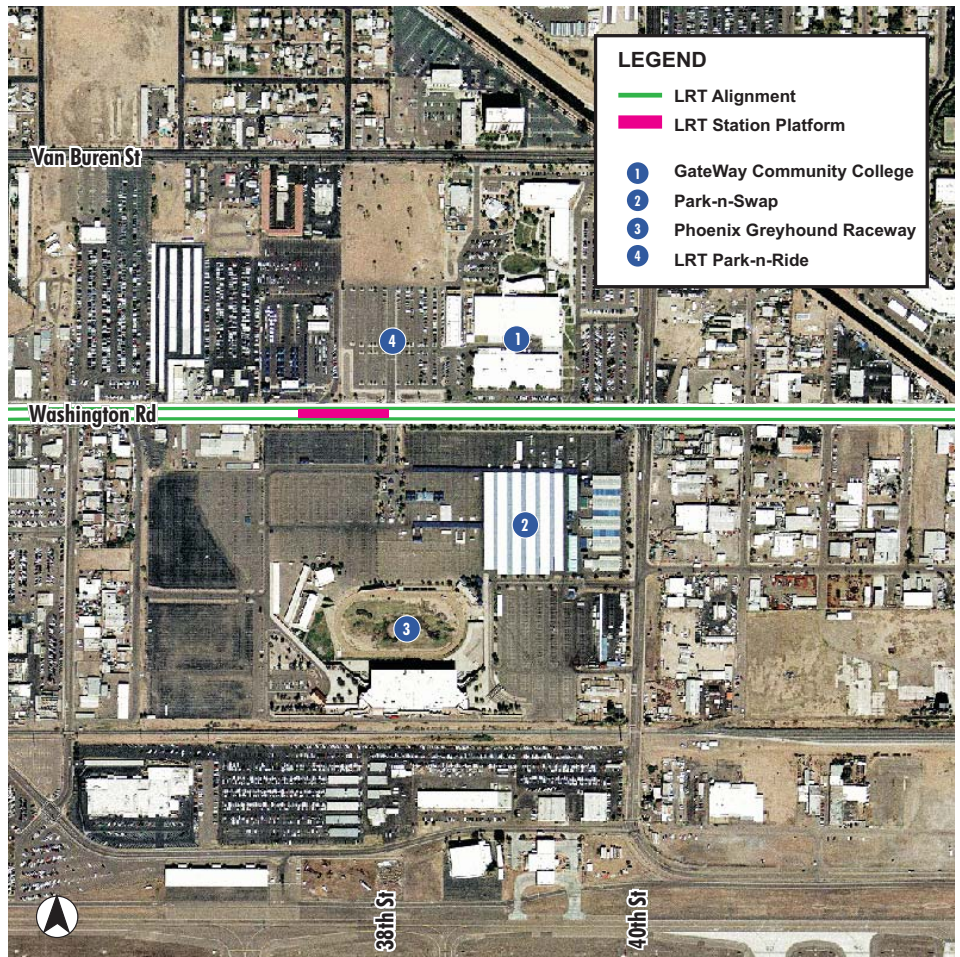
- GateWay Community College (10,000 students, 300 staff daily)
- GateWay Community High School (380 students on GCC campus)
- Serves GateWay Village Core
- Excellent access to Greyhound Park/Swap Meet property

NEW DEVELOPMENT

- GateWay Community College expansion

DEVELOPMENT OPPORTUNITIES

The City of Phoenix's Downtown Development Office is working to maximize the community's investment in the light rail system by promoting and attracting transit-oriented development near light rail stations. The city's goal is to enhance and develop high quality, vibrant mixed-use urban environments that are carefully planned, designed to attract and increase transit ridership and are pedestrian friendly. Please contact our office for information on development opportunities and initiatives at or near the 18 light rail station locations in Phoenix.



A rendering of the Washington Street/38th Street Station looking west

CONTACT INFORMATION

CITY OF PHOENIX

Downtown Development Office
 200 West Washington, 20th Floor, Phoenix, AZ 85003
 Phone: (602) 534-7143 Fax: (602) 534-7140
 TTY: (602) 534-3476 Email: downtown@phoenix.gov

VALLEY METRO RAIL

411 N. Central Avenue, Ste. 200, Phoenix, AZ 85004
 Phone: (602) 534-1807 TTY: (602) 322-4499
 Email: rail@valleymetro.org